

OxyLED Motion Sensor Night Light

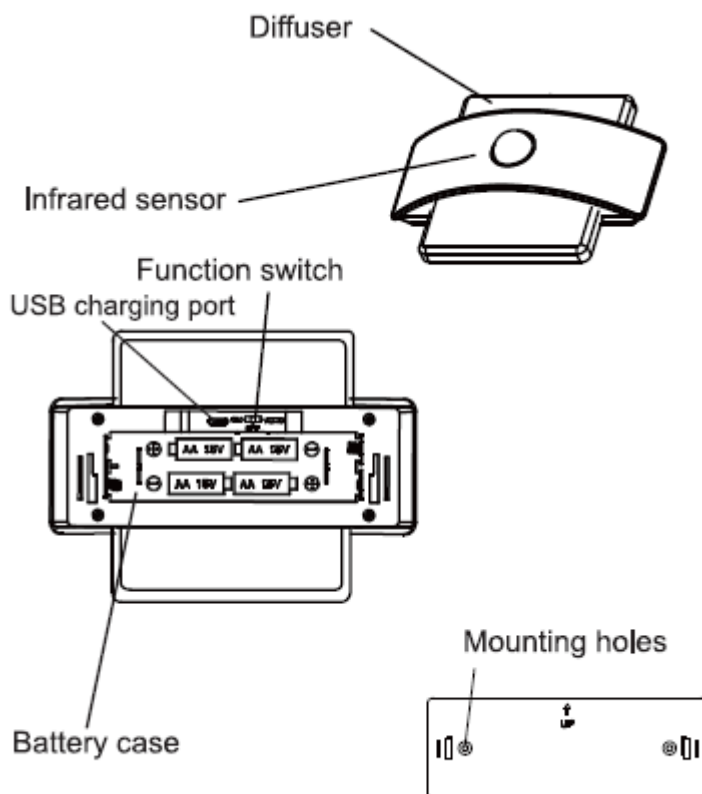
Model: T-03X

User Manual

Description

Using PIR technology to detect human motion(within 3m), the OxyLED T-03X Wireless Motion Sensor Night Light turns on or off based on human movement and ambient light levels(10 Lux). It is designed to substitute a standard light and built for convenience and personal safety in dark areas. Powered by built-in rechargeable battery or 4 external AA batteries(not included), it is ideal for corridors, cabinets, workshops, basements, indoor garages, stairwells, doorways, closets, and other dark places in your home and shed.

Illustration



Features

- 14 super bright LEDs: Contains 14 energy-saving LEDs to illuminate dark spaces.
- Motion activated: Automatically senses human motion within 3 meters and turns off 15s after you walk away from sensing range.
- 2 powered ways: Built-in rechargeable battery or 4 AA batteries(not included)

- 2 working modes: OFF/ON/AUTO Switch. AUTO for motion-sensitive mode; ON for constant on mode
- Simple installation: Mount by 3M adhesive strip or screw accessories
- Application: bedroom, hallway, washroom, balcony, corridor, stair, attic, the basement, garage, cellar, wardrobe, hotel ambry, kitchen cupboards, bookcase, tents etc.

Specifications

- Sensitivity: 3m/10ft
- Sensor range: 120 degrees
- LED quantity: 14 x SMD2835 LED
- Power: 2W
- Light color: white
- LED life: 50,000 hours or more
- Battery: built-in 3.7V/600mAh lithium battery
- Size: 149 x 109 x 45 mm / 5.87 x 4.29 x 1.77 in (L x W x H)
- Material: aluminum + ABS
- Weight: 168g/5.93oz

Operation

1. Charging

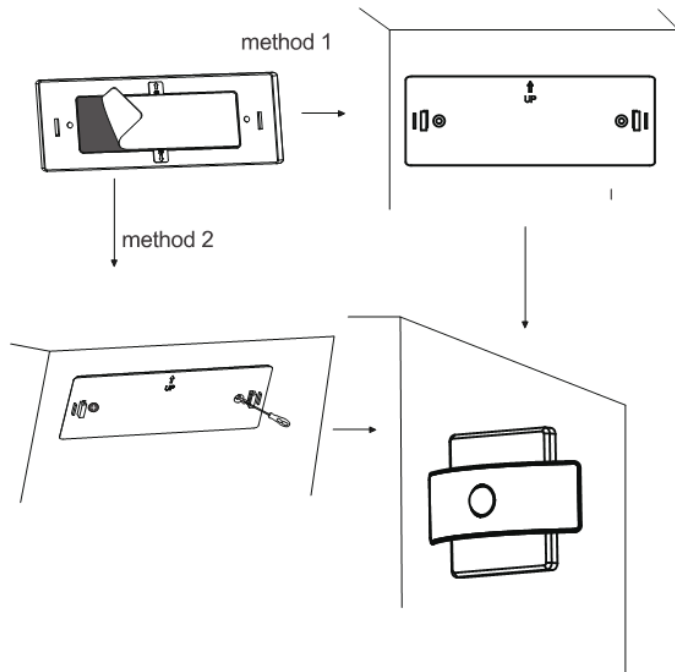
- Charge your T-03X night light with supplied Micro USB cable or other Micro USB cable.
- Connect it to any 5V USB port such as power adapter, power bank, computer USB port etc.

LED indicator lights on red during charging process while lights on green after being fully charged.

Note:

- Please remove external AA batteries before charging the night light.
- If the night light won't be used for a long time, we suggest that you'd better take a regular charging every half year.

2. Installation



a. Mount by 3M adhesive strip

- Choose a smooth and dry position that you want to mount. If not, please clean it before sticking.
- Peel down the surface of 3M adhesive strip and then stick it on the ideal position chosen.

b. Mount by supplied screws

This device is supplied with 2 screws for extra installation.

- Remove the battery door according to the arrow direction.
- Choose a proper position to mount the battery door on the wall via supplied screws and pillar hinges.
- Align the main body of light to the grooves of battery door and snap it on.

3. Choose Lighting Mode

The OFF/ON/AUTO Switch locates UNDER the battery door(Auto mode recommended).

OFF- never lights on

ON- constantly on

AUTO – lights on when people get close to its sensing range at darkness while lights off 15s after they walk out of detection range

Note:

- This motion sensor night light won't light up during daytime when ambient light > 10 Lux.

- Don't put 2pcs of this light too close. The light of one may cause the other not light up if they are too close.

Package Contents

1 x OxyLED T-03X Motion Sensor Night Light

1 x Micro USB Cable

1 x 3M Adhesive Strip

2 x Screw

2 x Pillar Hinge

1 x User Manual

1 x Warranty Card